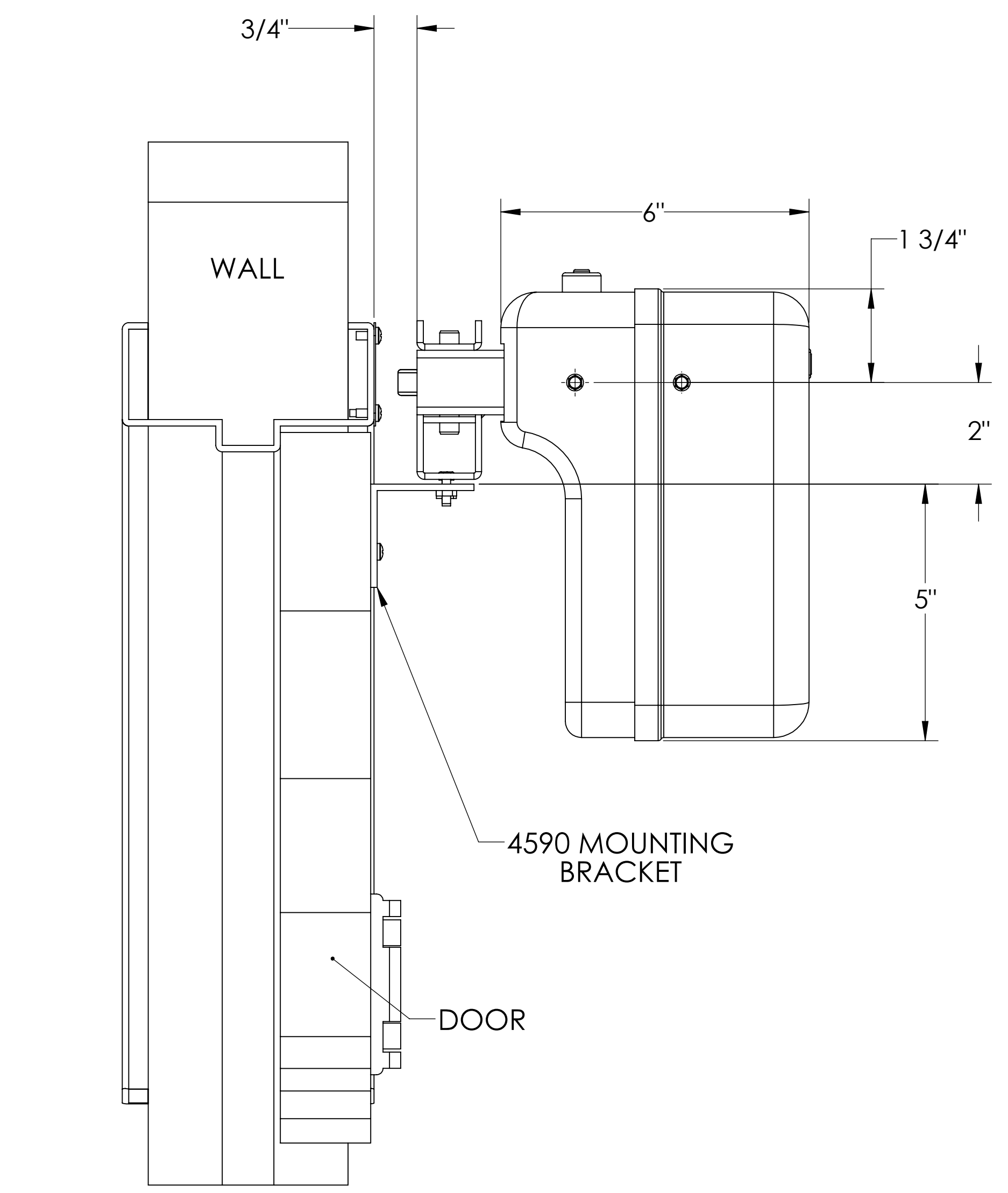


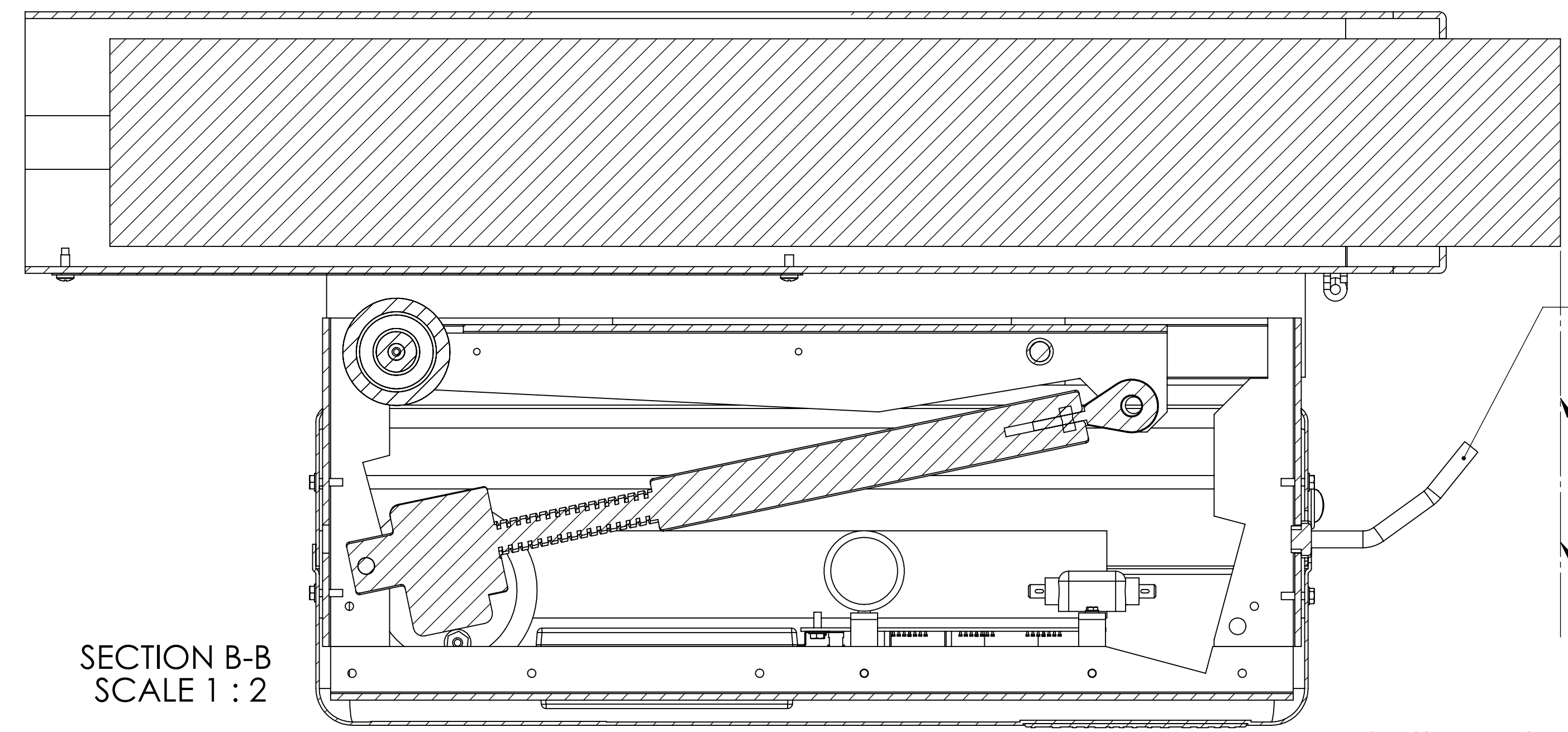
16" ROLLER SCUFF PLATE AND LOCATION NOT TO SCALE LOCATE AFTER UNIT HAS BEEN INSTALLED



WALL

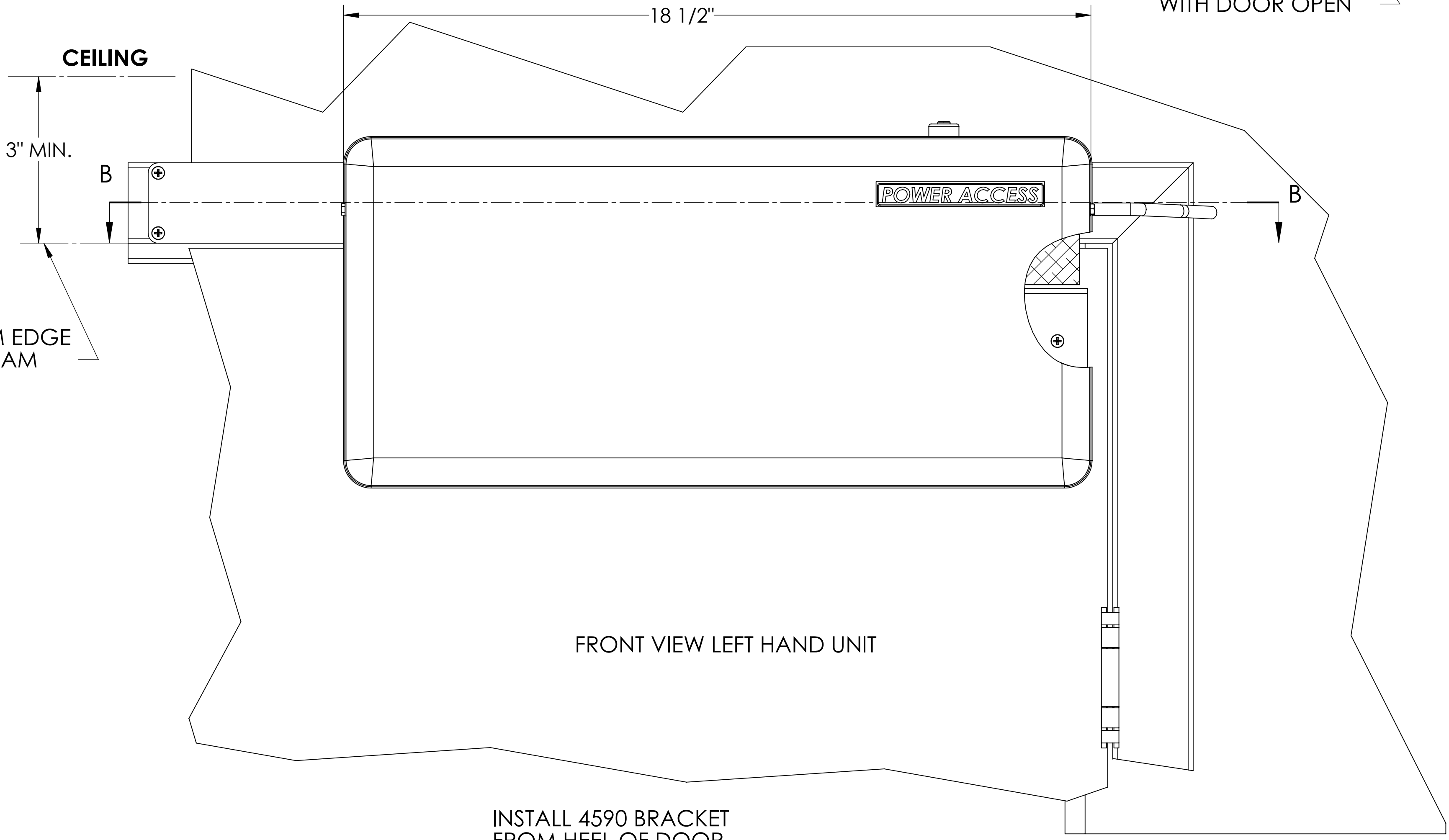
4590 MOUNTING BRACKET

DOOR



SECTION B-B SCALE 1:2

8 1/2 MIN. CLEARANCE WITH DOOR OPEN



CEILING

3" MIN.

BOTTOM EDGE OF JAM

POWER ACCESS

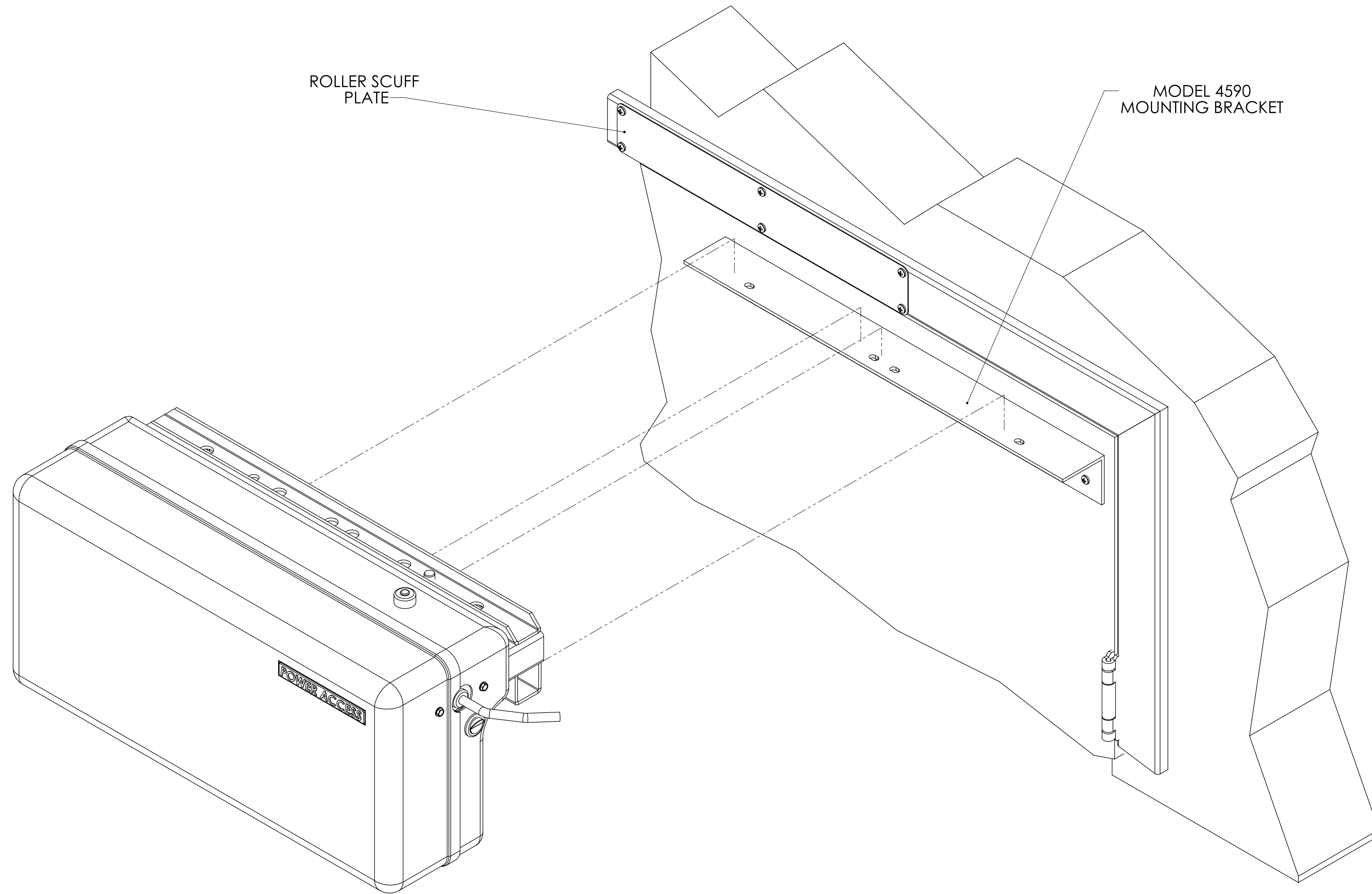
FRONT VIEW LEFT HAND UNIT

INSTALL 4590 BRACKET FROM HEEL OF DOOR

MODEL 4300 DOOR MOUNTED
 POWER REQUIRMENTS-115 VAC, 3 AMP, SINGLE PHASE
 GROUND RECEPTACLE, 9' POWER CORD SUPPLIED.
 20' CORD OPTIONAL. SENSORS-TOUCH SWITCHES,
 WALL SWITCHES OR RADIO CONTROL AS SPECIFIED.

PROPRIETARY AND CONFIDENTIAL
 THE INFORMATION CONTAINED IN THIS DRAWING
 IS THE SOLE PROPERTY OF POWER ACCESS
 CORPORATION. ANY REPRODUCTION IN PART OR
 AS A WHOLE WITHOUT THE WRITTEN PERMISSION
 OF POWER ACCESS CORPORATION IS PROHIBITED.

UNLESS OTHERWISE SPECIFIED:		DRAWN	NAME	DATE	TITLE: POWER ACCESS
DIMENSIONS ARE IN INCHES		BH	BH	10/29/15	
TOLERANCES:		CHECKED			REV
FRACTIONAL ±		ENG APPR.			
ANGULAR MATCH ±		MFG APPR.			SIZE DWG. NO. D 4300DL
BEND ±		G.A.			SCALE: 1:8 WEIGHT: SHEET 1 OF 2
TWO PLACE DECIMAL ±		COMMENTS:			
THREE PLACE DECIMAL ±					
INTERPRET GEOMETRIC TOLERANCING PER:					
MATERIAL					
NEXT ASSY	USED ON	FINISH			
APPLICATION					



ROLLER SCUFF
PLATE

MODEL 4590
MOUNTING BRACKET

PROPRIETARY AND CONFIDENTIAL
THE INFORMATION CONTAINED IN THIS DRAWING IS THE SOLE PROPERTY OF POWER ACCESS CORPORATION. ANY REPRODUCTION IN PART OR AS A WHOLE WITHOUT THE WRITTEN PERMISSION OF POWER ACCESS CORPORATION IS PROHIBITED.

UNLESS OTHERWISE SPECIFIED:		NAME	DATE	POWER ACCESS	
DIMENSIONS ARE IN INCHES		BH	10/29/15	TITLE:	
TOLERANCES:				MODEL 4300	
FRACTIONAL ±				DOOR MTG.	
ANGULAR MATCH ±				SIZE DWG. NO.	
TWO PLACE DECIMAL ±				D 4300DL-1	
THREE PLACE DECIMAL ±				SCALE: 1:8 WEIGHT: SHEET 2 OF 2	
INTERPRET GEOMETRIC TOLERANCING PER:		G.A.		REV	
MATERIAL		COMMENTS:			
NEXT ASSY	USED ON	FINISH			
APPLICATION					