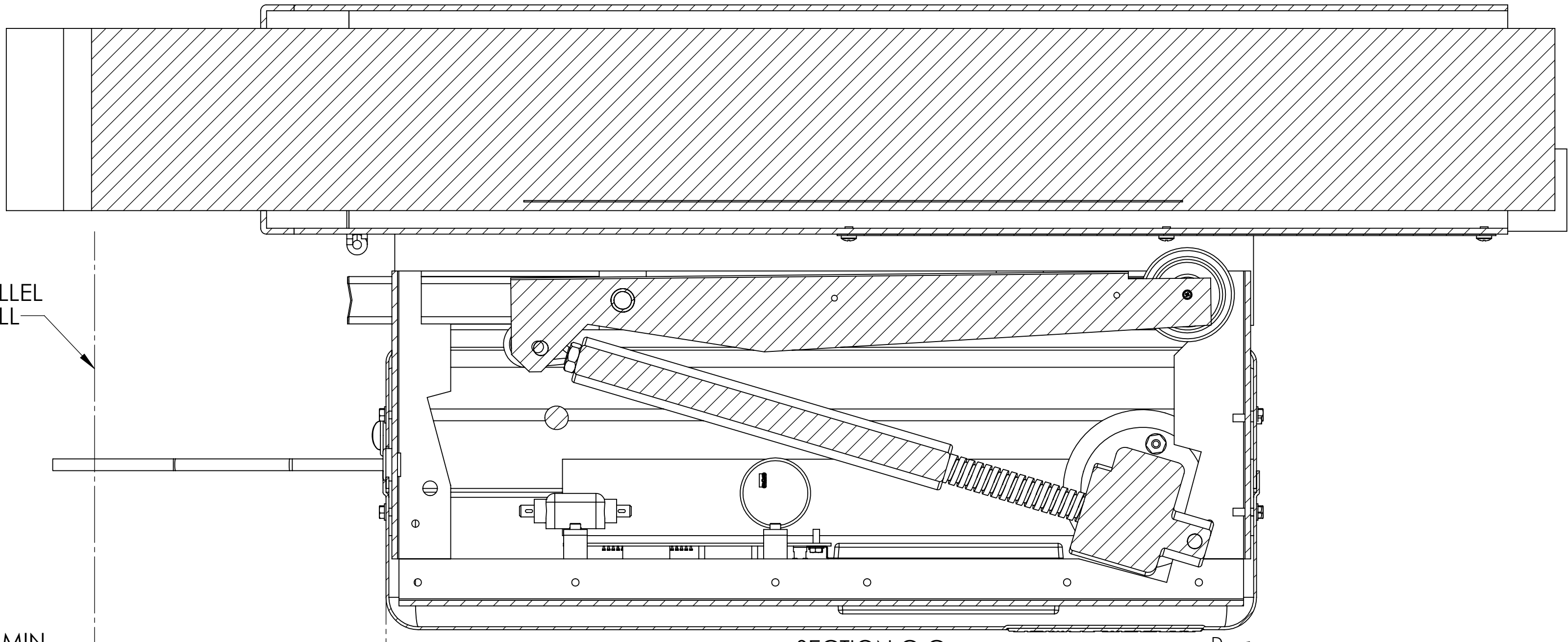
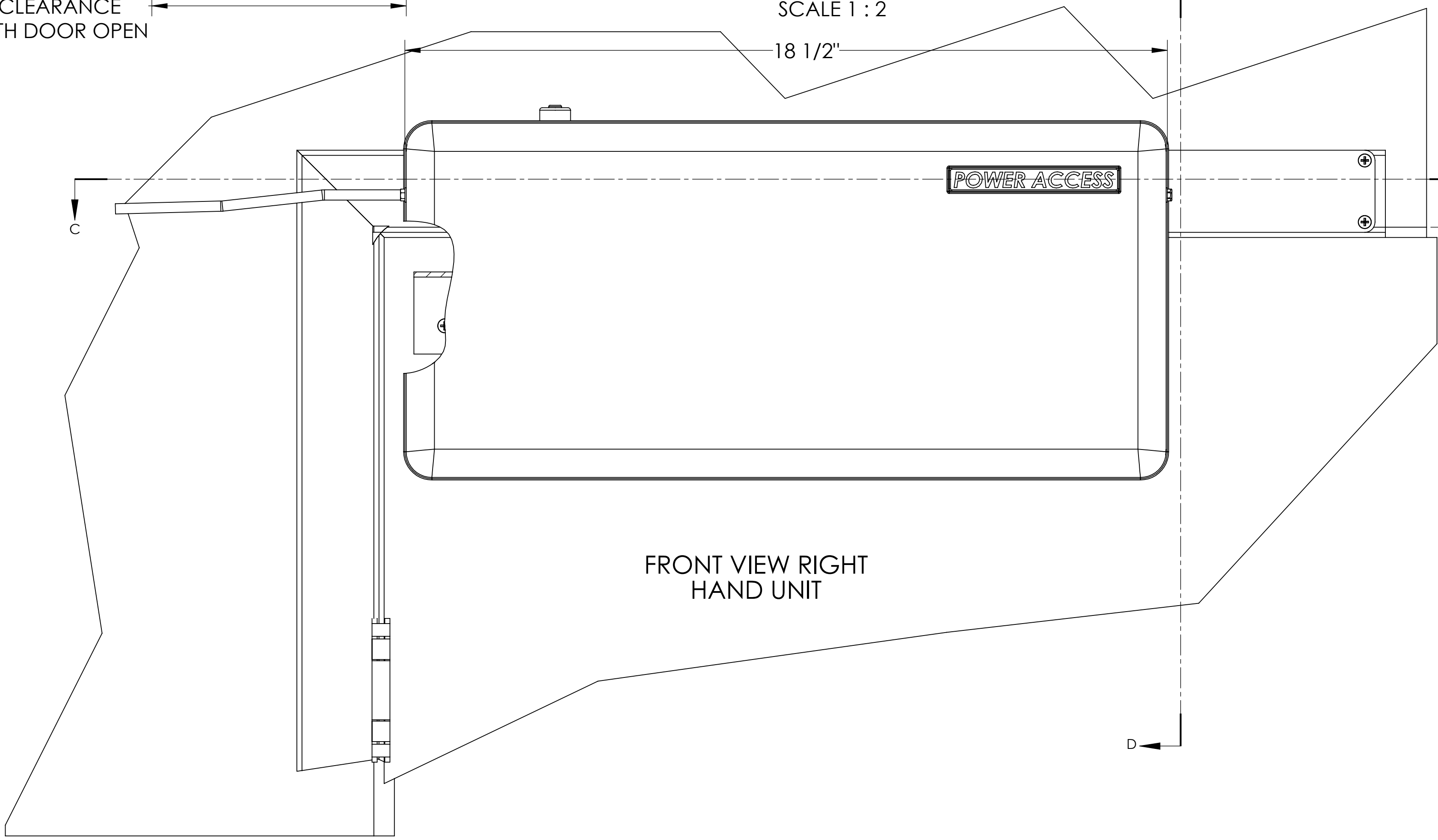


DOOR CLOSURE POSITIONED HERE
(OR CONCEALED)

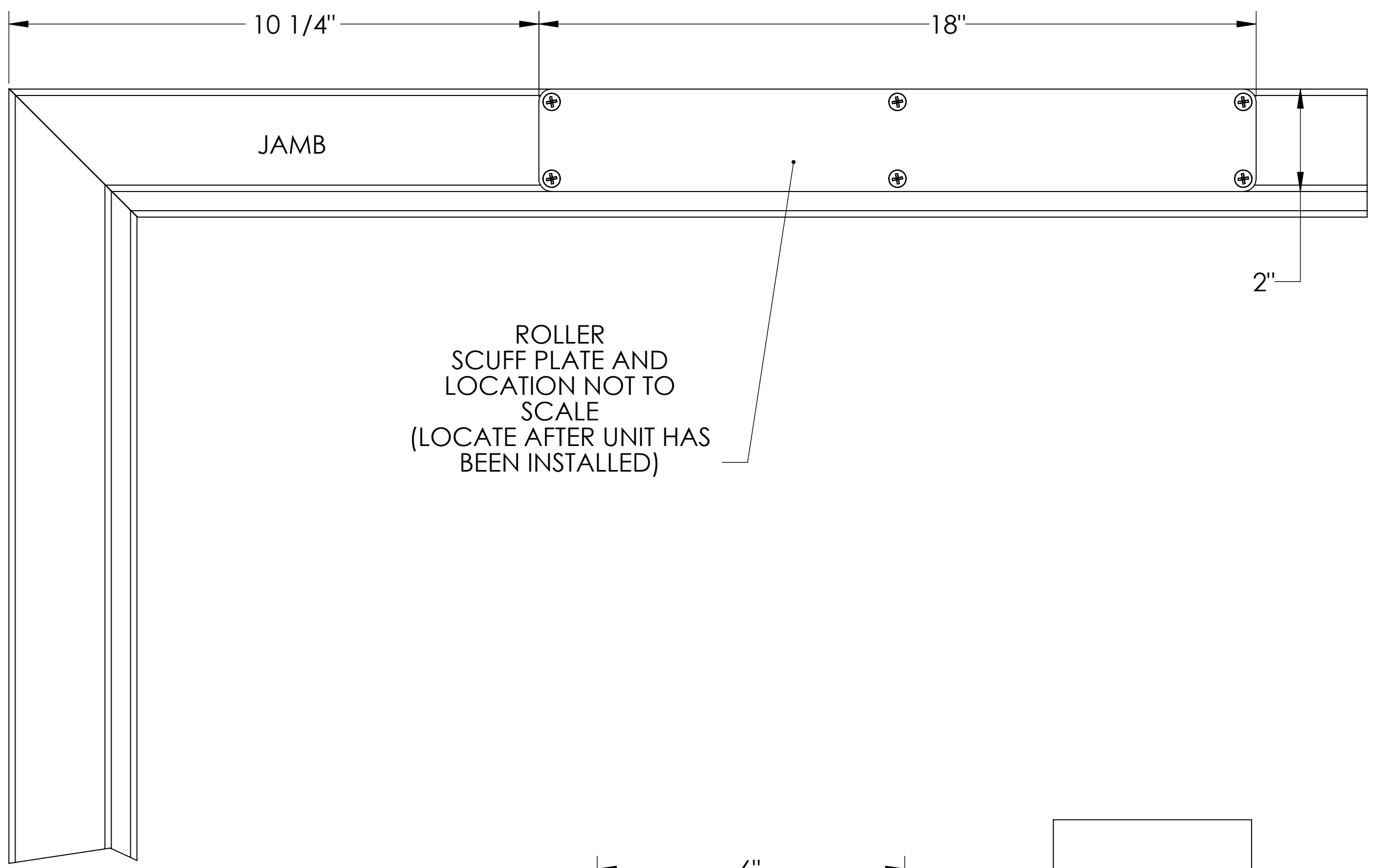


SECTION C-C
SCALE 1:2

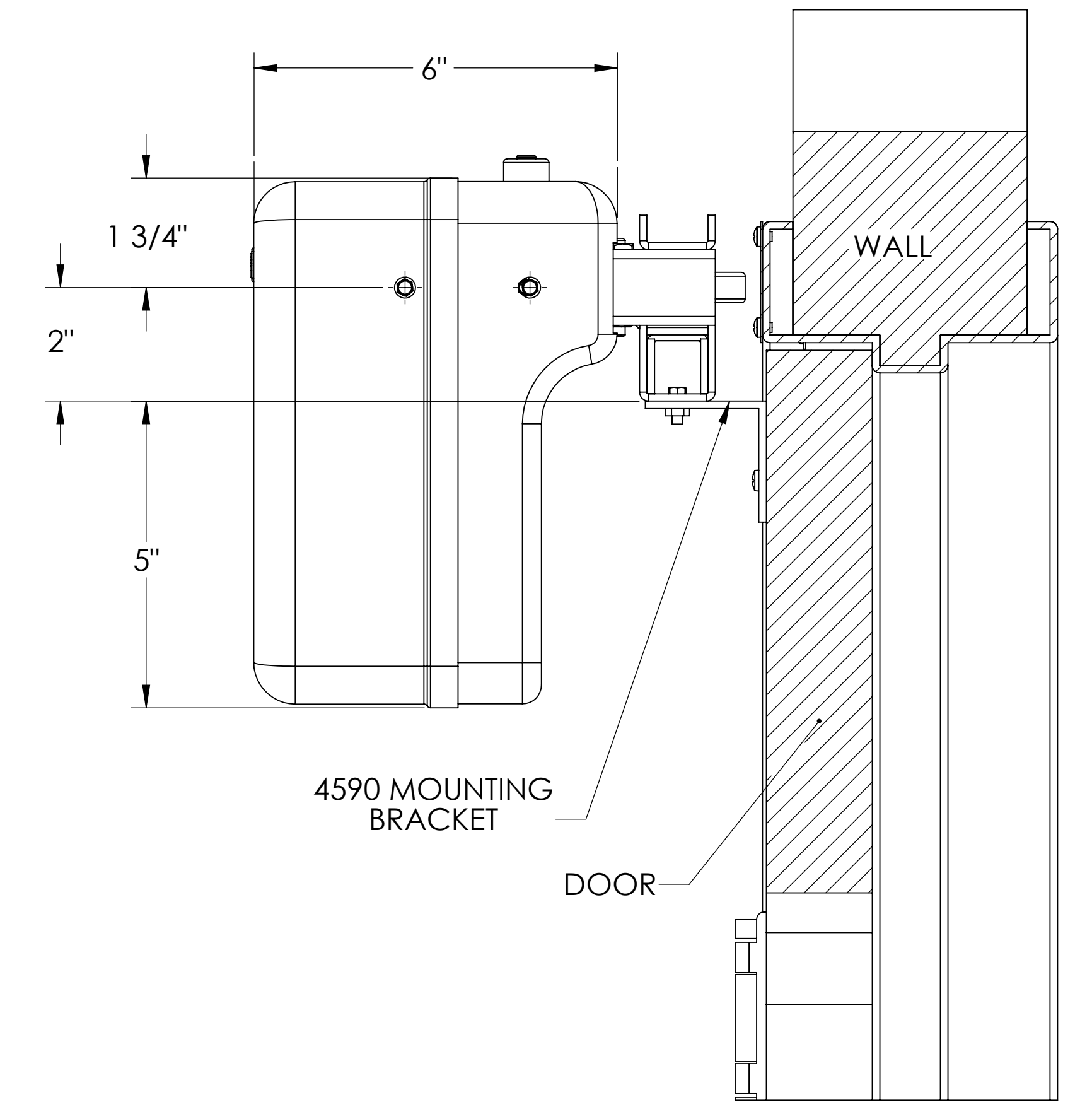
8 1/2" MIN
CLEARANCE
WITH DOOR OPEN



FRONT VIEW RIGHT
HAND UNIT



ROLLER
SCUFF PLATE AND
LOCATION NOT TO
SCALE
(LOCATE AFTER UNIT HAS
BEEN INSTALLED)



4590 MOUNTING
BRACKET

SECTION D-D
SCALE 1:2

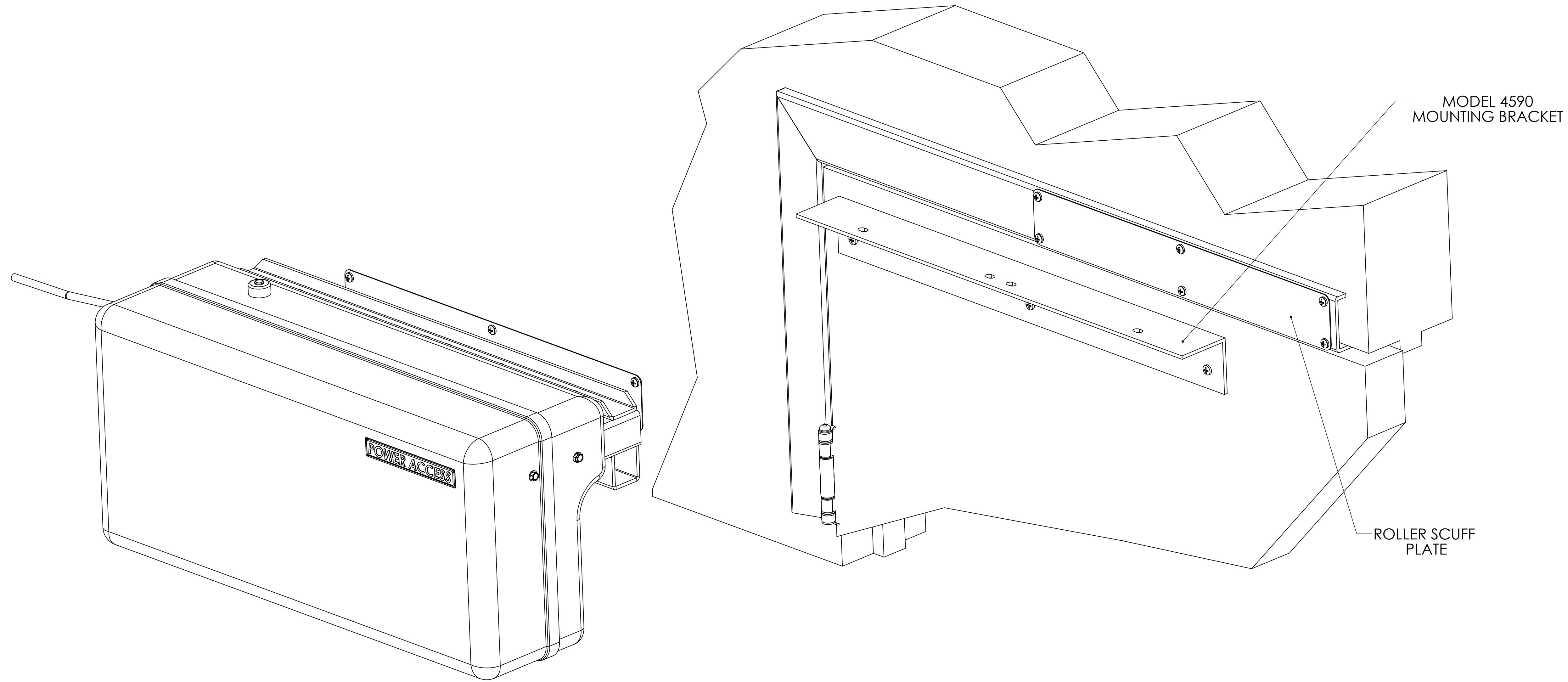
MODEL 4300 DOOR MOUNTED UNIT
POWER REQUIREMENTS-115 VAC, 3 AMP, SINGLE PHASE

GROUNDING RECEPTACLE, 9' POWER CORD, SUPPLIED. 20' POWER
CORD OPTIONAL. SENSORS-TOUCH SWITCHES, WALL SWITCHES,
OR RADIO CONTROLLED AS SPECIFIED.

PROPRIETARY AND CONFIDENTIAL

THE INFORMATION CONTAINED IN THIS DRAWING
IS THE SOLE PROPERTY OF POWER ACCESS
CORPORATION. ANY REPRODUCTION IN PART OR
AS A WHOLE WITHOUT THE WRITTEN PERMISSION
OF POWER ACCESS CORPORATION IS PROHIBITED.

UNLESS OTHERWISE SPECIFIED:		NAME	DATE	POWER ACCESS
DIMENSIONS ARE IN INCHES		BH	10/29/15	
TOLERANCES:	FRACTIONAL ±	CHECKED		TITLE:
	ANGULAR MATCH ±	ENG APPR.		MODEL 4300
	TWO PLACE DECIMAL ±	MFG APPR.		DOOR MTD.
	THREE PLACE DECIMAL ±	G.A.		SIZE DWG. NO.
INTERPRET GEOMETRIC TOLERANCING PER:		COMMENTS:		D 4300DR
				SCALE: 1:8 WEIGHT: SHEET 1 OF 2
NEXT ASSY	USED ON	FINISH		
APPLICATION				



PROPRIETARY AND CONFIDENTIAL
 THE INFORMATION CONTAINED IN THIS DRAWING IS THE SOLE PROPERTY OF POWER ACCESS CORPORATION. ANY REPRODUCTION IN PART OR AS A WHOLE WITHOUT THE WRITTEN PERMISSION OF POWER ACCESS CORPORATION IS PROHIBITED.

UNLESS OTHERWISE SPECIFIED:		DRAWN	NAME	DATE	POWER ACCESS
DIMENSIONS ARE IN INCHES		BH	BH	10/29/15	
TOLERANCES:		CHECKED			TITLE:
FRACTIONAL ±		ENG APPR.			MODEL 4300
ANGULAR: MACH ±		MFG APPR.			DOOR MTG.
BEND ±					
TWO PLACE DECIMAL ±					
THREE PLACE DECIMAL ±					
INTERPRET GEOMETRIC TOLERANCING PER:					
MATERIAL					
NEXT ASSY					
USED ON					
FINISH					
APPLICATION					

SIZE | DWG. NO. | REV
D | 4300DR-I |
 SCALE: 1:8 | WEIGHT: | SHEET 2 OF 2

REV
 4300DR